

Entertainment Rights Management Software Company

Scaling Media Asset Management
With Backend and UI Solutions



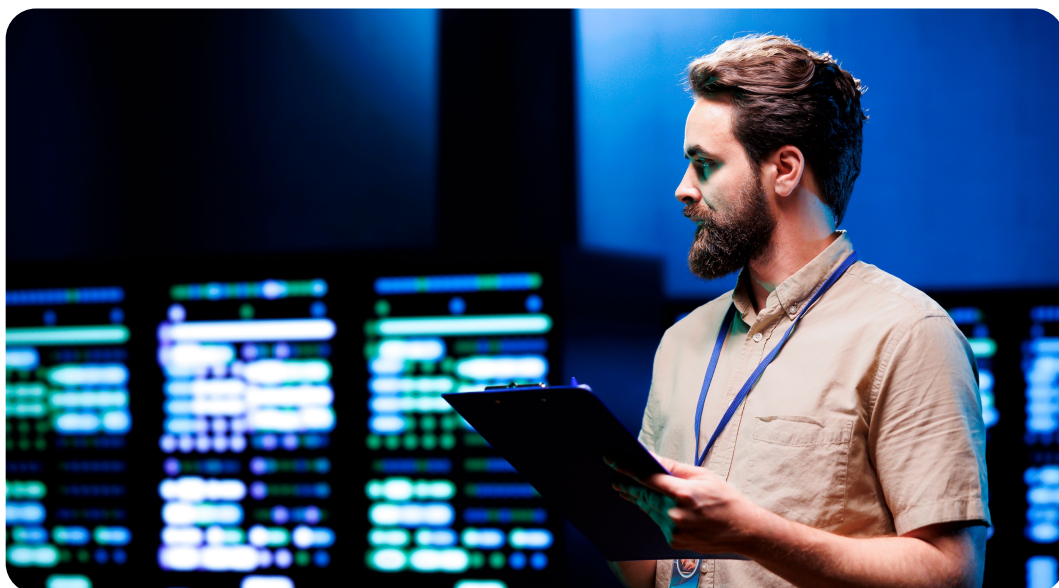
About the Client

Our client is a leader in media asset management, providing a secure and efficient platform for managing extensive media contracts and metadata. Their services empower businesses to handle complex agreements across diverse media types with ease.

Project in Numbers

30-55 team members assigned flexibly

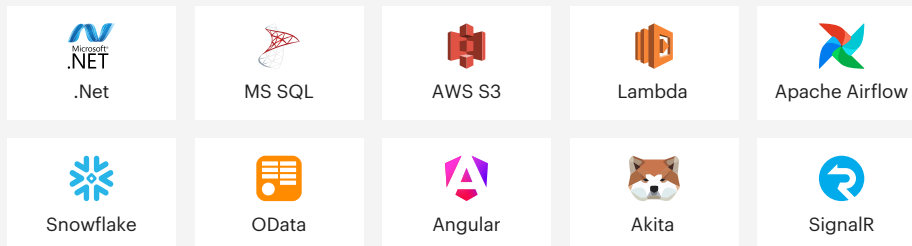
6 technical leaders promoted from within



Team

- Backend Developers
- Frontend Developers
- Data Engineers
- QA Engineers
- Technical Leaders
- Product Managers

Technologies



Project Overview

A leading provider in media asset management aimed to enhance its backend infrastructure and develop a modern user interface (UI) to support their portfolio of media assets, including contracts, metadata, and complex agreements across movies, books, merchandise, and more. The objective was to streamline user interactions and improve backend accuracy and performance for managing extensive media asset contracts.



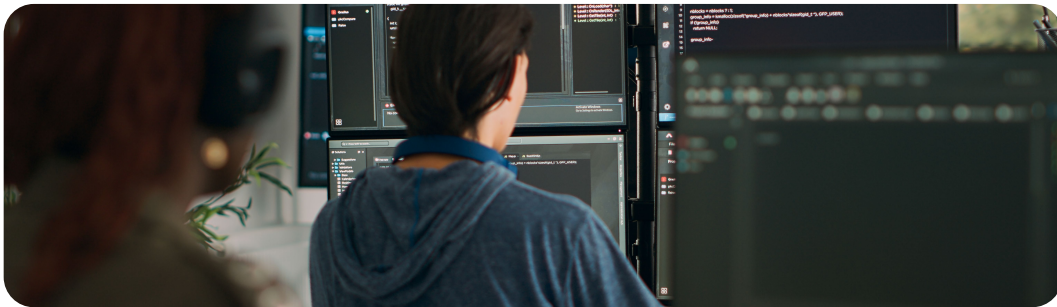
Challenges Faced

At the beginning of the engagement, they encountered the challenge of maintaining their backend system, essential for accurate financial calculations tied to media contracts, while simultaneously developing a new, intuitive UI. The legacy system required updates to scale with growing demand, and the new UI needed to be both responsive and user-friendly to handle the client's extensive media asset portfolio.

Solutions Implemented

Our team at Distillery collaborated closely with the client to deliver robust solutions:

1. **Backend Stability:** We ensured accuracy and stability in financial calculations through improvements in backend infrastructure, enabling seamless management of media contracts.
2. **New UI Development:** The frontend team utilized Angular to build a responsive UI that offers an intuitive user experience, allowing for real-time data handling and smoother client-server interactions.
3. **Leadership Integration:** Six of Distillery's developers were promoted to technical leads, managing development processes and aligning team goals with the client's objectives through SCRUM methodology.



Outcomes Achieved

The partnership resulted in a stabilized backend infrastructure capable of handling complex financial calculations essential for managing extensive media contracts, ensuring seamless and accurate operations. Additionally, the development of a modern, user-friendly UI transformed the user experience, allowing clients to navigate media assets effortlessly while maintaining legacy system functionality. Distillery's flexible team structure, with a scalable workforce of 30 to 55 professionals, provided the client with specialized expertise across backend, frontend, and data-focused tasks, enabling efficient project delivery and alignment with evolving business needs.



Successful Growth And Positive Financial Outcomes

Our client's improved infrastructure supported significant growth, positioning them for two successful acquisitions. The stability, scalability, and enhanced user experience we delivered helped demonstrate their platform's value and attract this strategic investment.



About Distillery

Distillery is a premier nearshore software development firm. At our core, we embed elite AI-enabled senior engineers and agile experts directly into our client's projects, accelerating velocity by at least 40-60%, ultimately helping our clients get digital products to market faster and driving more revenue.

We support essential applications, mobile apps, websites, and eCommerce platforms through the placement of senior, strategic technical leaders and by deploying fully managed technology teams that work intimately alongside our client's in-house development teams.

At Distillery, we're not here to reinvent nearshore software development, we're on a mission to perfect it.

Awards



Have any questions?

We're happy to answer!

[Learn More](#)

www.distillery.com

[Email Us](#)

reply@distillery.com